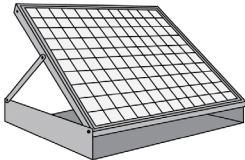




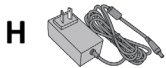


250 & 400 MaxLED24® Installation Instructions

Parts Included

		Key	Part Name	Model K-MLED-24	Model K-MLED-STD
A		A	Solar Panel	1	1
		B	LED Plate	1	1
		C	Ceiling Ring	1	1
B		D	Diffuser Ring Kit	1	1
C		E	Screw Kit	1	1
D		F	Movement Sensor	1	1 (Accessory AC pack)
E		G	Remote Control	1	1 (Accessory AC pack)
		H	AC Pack		1 (Accessory AC pack)

CAUTION

When installing SolarBright® MaxLED24® system ensure that all safety measures and precautions are taken. The installation of the product will require using power tools, climbing on the roof and possibly working in a confined space. The product has been designed to be installed by a handyman, however the installer must be competent to carry out the task safely and correctly. For safe installation and use, do not deviate from these installation instructions.

Required Tools

- Impact Driver / Screwdriver
- Drop Sheet / Clean up tools
- Gyprock Saw

Safety Information

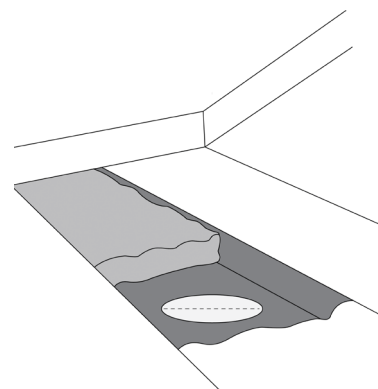
- Wear safety glasses and work gloves when using power tools.
- Use protective work gloves.
- Safety Harness (Working at Height).

Step 1

From inside room, mark where the MaxLED will go. You can use a stud finder push a pin in the center between ceiling joists

Go into the roof space, locate the pin, and ensure there's enough clearance for the MaxLED to fit.

The installation of MaxLED is highly flexible thanks to its long cable, which allows the solar panel to be positioned on the roof away from the LED light rather than directly above it.

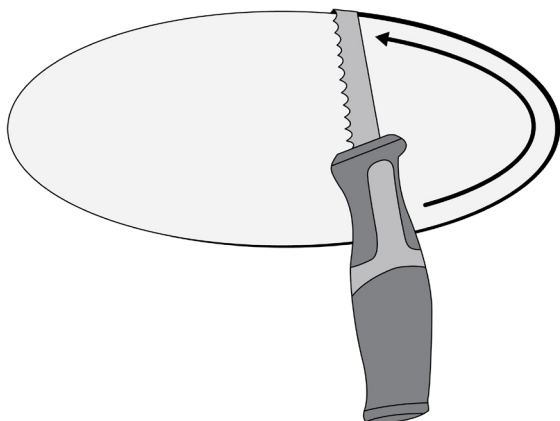


Step 2

Start fitting Solar Panel as per the separate installation instruction provided.

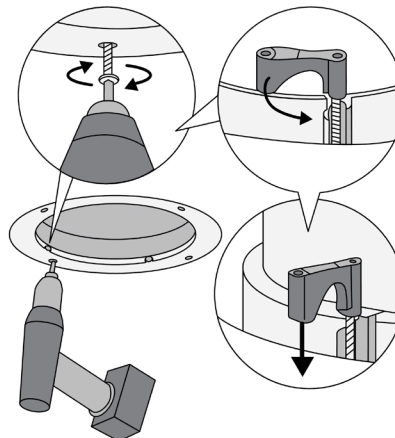
Step 3

From inside the room, use the provided template to center the hole where the diffuser will go. Hold the template in position, trace the outer circle, and cut it out with a gyro rock saw.



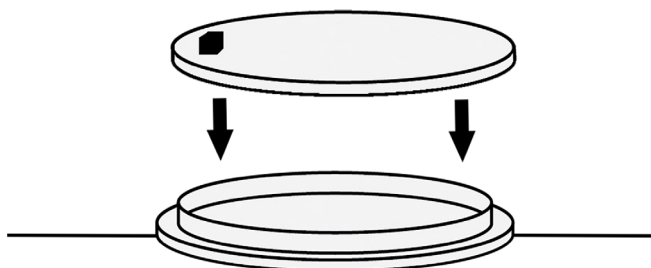
Step 4

Insert the ceiling ring into the hole, as you tighten the screws the angle adaptors will open out and grip the ceiling. Keep tightening the screws until the ceiling ring is being held tight in place.



Step 5

Fit LED ring to the top of the Ceiling ring.

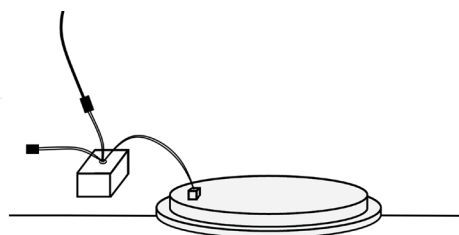


Step 6

For Day Model connect cable from solar panel directly to the LED Light.

Other Models:

1. Connect cable from solar to the movement sensor
2. Connect movement sensor to the LED light
3. Connect AC adaptor to the movement sensor (Accessory purchased separately)



Note

Each cable on the movement sensor has a different tail. Each tail will only plug into the correct corresponding tail from (LED Ring, Solar Panel, AC Adaptor)

AC pack add on requires a General Purpose Outlet (GPO) in your roof.

Remote Control Pairing Instructions

1. Disconnect all power sources to the movement sensor from Solar panel, AC or battery for 10 seconds
2. Reconnect power supply then push the 2 dimming buttons (light bulbs) simultaneously for 5 seconds
3. The two lights above the dimming buttons will turn solid while the light in the top right hand corner will start flashing and LED panel will turn on. Your Remote Control is ready to use.