

250mm Concrete & Terracotta Tile Flashing Installation Instructions

CAUTION

Please take precautions during installation to prevent any injuries. Wear safety glasses and work gloves when using power tools.

Required Tools

- Pencil
- Tin Snips / Plastic Cutter
- Angle Grinder or Masonry Blade
- Impact Drill
- Saw
- Hammer
- Measuring Tape

Safety Information

- Wear safety glasses and work gloves when using power tools.
- Use protective work gloves.
- Safety Harness (Working at Height).

250mm Tile

Step 1

Remove 1 roof tile (2 tiles for Terracotta) where the MaxLight will be installed and make sure the opening is clear of the rafters.



Step 2

Place the front of flashing against the back of the roof tile and trace the shape of tile profile with a marker.



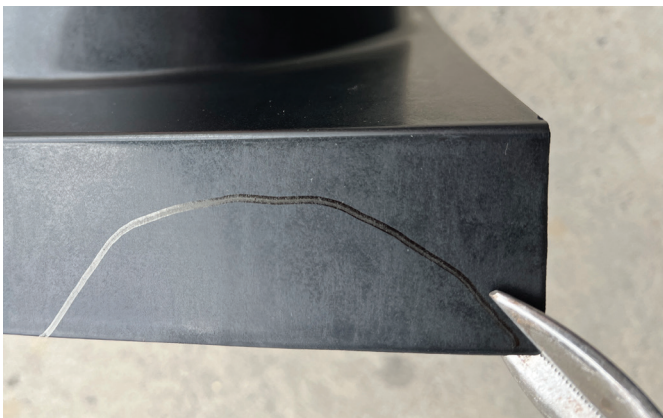
For Terracotta Tile roofs please proceed to Steps 2A and 2b at bottom of page 2.

Note

The picture above shows roof tiles laid in a straight pattern. In the case of a staggered pattern, the front of the flashing will fit over two tiles at the front and slide underneath two tiles at the back.

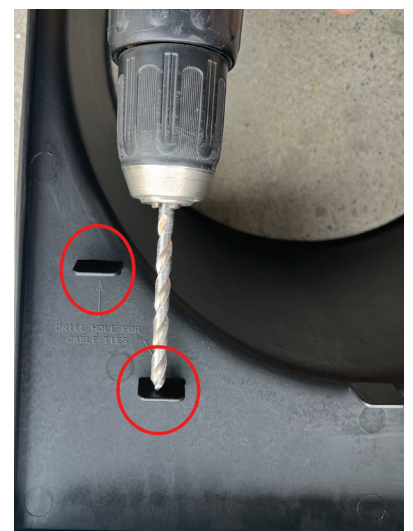
Step 3

Cut out the traced part using tin snips / plastic cutter.



Step 4

Drill a hole on either side of flashing in one of the locations indicated, this will be used later to Zip tie the front of the flashing to a batten.



Step 5

Place the flashing in position by removing or lifting the tiles above and to the sides so the top of the flashing sits underneath the top tile and the underside legs rest on top of top batten.



Step 6

Mark and notch the tile above so it can surround the turret and bottom of the tile can sit in line with rest of the tiles.



Step 7

Insert a cable tie inside the hole in lugs of the underside of the flashing and tie it down around the battens.



Step 8

Check to see if flashing is sitting correctly and securely in position.



Additional steps for 250mm Terracotta Tiles

SolarBright's Terracotta flashing is designed to be wide enough to cover most of terracotta tiled roofs. The width can be adjusted using the guideline ribs to fit various tile brands. Most of the steps outlined above for concrete tiles also apply to terracotta tiles. Insert these 2 steps between steps 2 and 3 above for Terracotta tiles.

Step 2A

The width of the flashing will need to be adjusted to suit different brands. Place the flashing on top of the opening and mark the side skirt to the length of 2 tiles, use the lines on the flashing as a guide.



Step 2B

Cut off a section of the long side of the flashing along the marked line from the previous step.

