

Corrugated & Trimdeck Metal Roof Flashing Installation Instructions

CAUTION

Please take precautions during installation to prevent any injuries. Wear safety glasses and work gloves when using power tools.

Required Tools

- Pencil
- Tin Snips
- Hiking Knife
- Hammer
- Compact Drill
- Clean Up Tools
- Electric Nibbler

Safety Information

- Wear safety glasses and work gloves when using power tools.
- Use protective work gloves.
- Safety Harness (Working at Height).

Step 1

Locate skylight/ventilator position on the roof.

Place flashing on the roof, so skylight/ventilator position is in the center of the turret.

Mark the 2 top corners as showing in the picture.

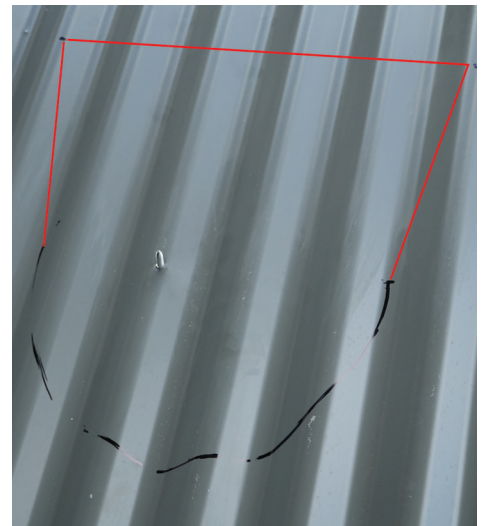
Trace half circle on the metal roof along the bottom half of the inside of turret.



Step 2

Remove the flashing and join the 3 sections.

Use edge of the flashing as a ruler to draw the 3 lines.



Step 3

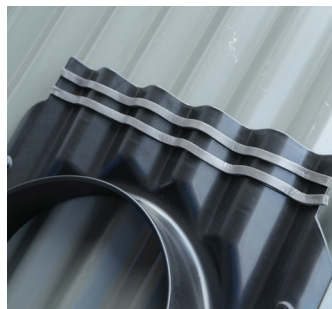
Cut out the marked "D" shape using hacking knife, tin snip or nibbler.



Step 4

Attach 2 lines of tape provided along the top surface at rear of the flashing as marked.

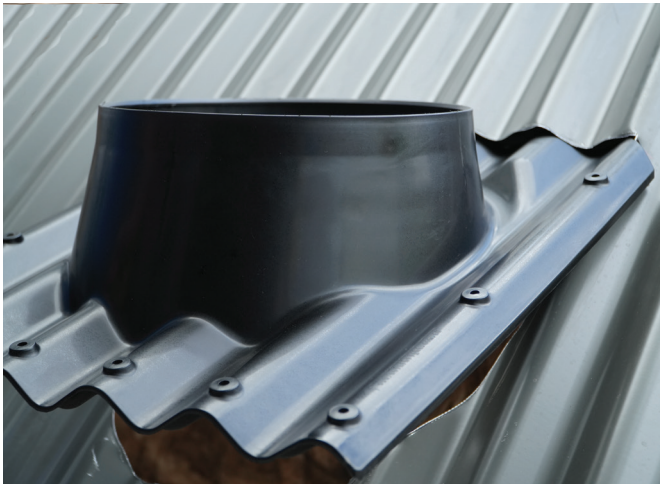
Attach 1 line of tape provided along the bottom edge at the front of the flashing – keep it away from the edge.



Step 5

Place the flashing in place by inserting it under the metal and above the batten.

Push back the flashing till the it reaches the 2 marked corners.



Step 6

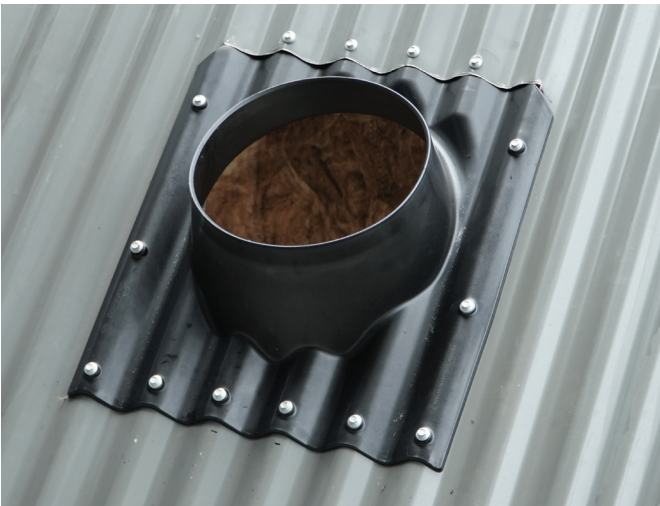
Apply a line of silicon along the front edge between the flashing and metal roof.

Apply a line of silicon to the rear section between flashing and metal roof.



Step 7

Secure the flashing to the roof metal using provided Tek screws, starting at the center front alternate left and right and work your way up to the rear.

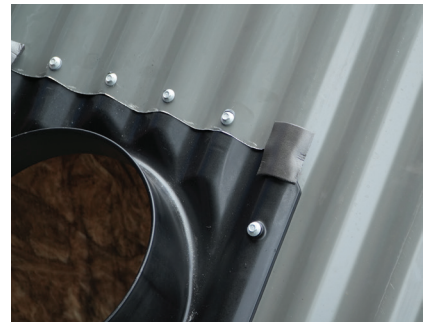


Step 8

Attach 2 squares of foam tape on the top 2 corners.

Place the 2 plastic caps over the foam tape.

Secure the caps to the roof using provided screws – trim excess foam.



Note

Cutting metal may produce metal dust especially when using power tools, ensure all dust and particles is cleaned and picked up.

Power grinder is not recommended to cut roof metal.

It is recommended that the back of the flashing when installed under the roof sheet is positioned on top of batten especially for the 400mm flashing.