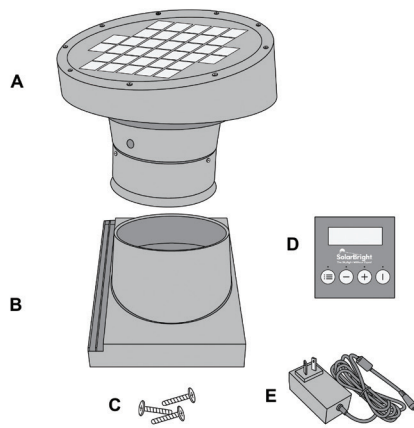
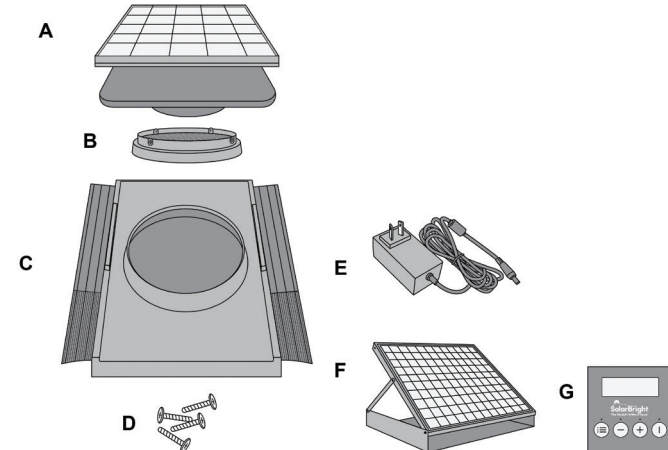


250 & 400 MaxBreeze® Installation Instructions

Parts Included MB250 models

	Key	Part Name	Qty
	A	MaxBreeze 250 Fan Unit	1
	B	Roof Flashing to suit roof	1
	C	Screw Kit	1
	D	Remote control Plus Models Only	1
	E	AC Adaptor Plus Model Only	1

Parts Included MB400 models

	Key	Part Name	Qty
	A	MaxBreeze 400 Fan Unit	1
	B	Reducer 400 series only	1
	C	Roof Flashing to suit roof	1
	D	Screw Kit for Flashing AC power pack (MB400 and MB400+)	1
	E	AC power pack (MB400 and MB400+)	1
	F	Solar Panel with integrated battery (MB400Z and MB400Z+)	1
	G	Remote control Plus Models only	1

CAUTION

When installing SolarBright® MaxBreeze® system ensure that all safety measures and precautions are taken. The installation of the product will require using power tools, climbing on the roof and possibly working in a confined space. The product has been designed to be installed by a handyman, however the installer must be competent to carry out the task safely and correctly. For safe installation and use, do not deviate from these installation instructions.

Required Tools

- Impact Driver / Screwdriver

Safety Information

- Wear safety glasses and work gloves when using power tools.
- Use protective work gloves.
- Safety Harness (Working at Height).

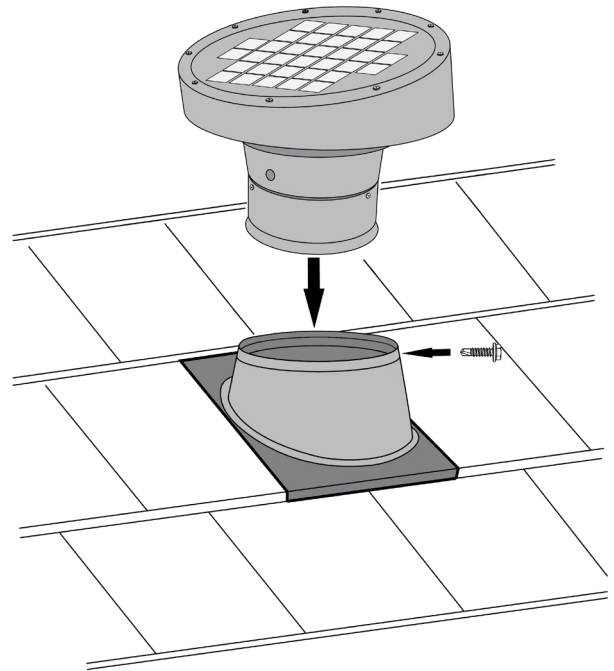
Instructions for MB250 model

Step 1

Fit roof flashing as per the separate installation instruction provided.

Step 2

- Line up the fan above the flashing
- Insert the thermostat cable inside the turret to hang inside the roof space (Plus models only)
- Fit fan inside the roof flashing
- Rotate the fan to face north
- Fix fan to the turret using provided self-tapping screws



Step 3 (Plus Model) Option

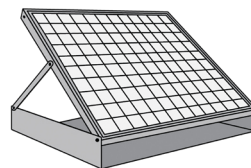
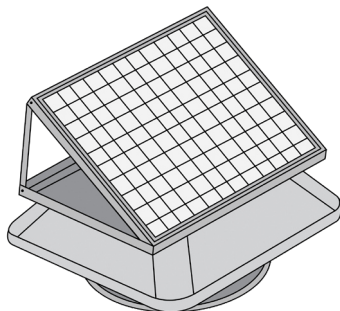
Connect the provided DC/AC adaptor to main power to ensure the fan operates when the solar panel is not producing power, such as night or on overcast days.

Note

This option requires a GPO (General Power Outlet) inside the roof.

Instructions for MB400Z model

Fit fan unit as per instructions for MB-400. See attached separate instructions sheet for attaching the second solar panel with built in battery to the roof and connecting it to the fan



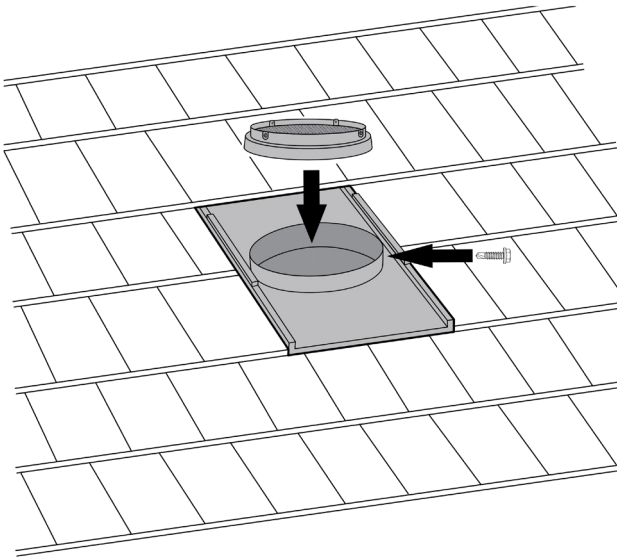
Instructions for MB400 model

Step 1

Fit roof flashing as per the separate installation instruction provided.

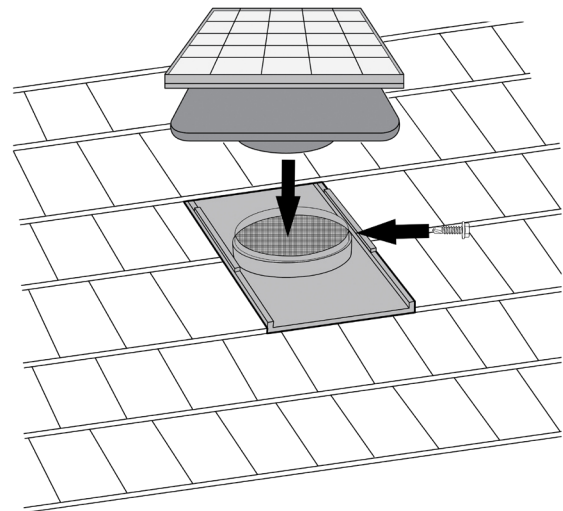
Step 2

Fit reducer on top of flashing and fix into place with provided self-tapping screws



Step 3

- Line up the fan above the flashing
- Insert the thermostat cable inside the turret to hang inside the roof space (Plus models only)
- Fit fan inside the roof flashing
- Rotate the fan to face north
- Fix fan to the turret using provided self-tapping screws



Step 4 (Optional)

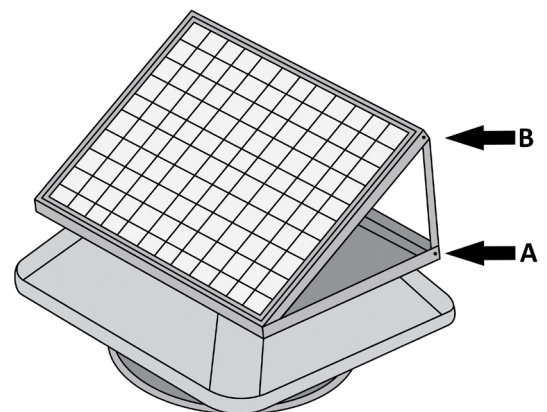
Connect the provided DC/AC adaptor to main power to ensure the fan operates when the solar panel is not producing power, such as night or on overcast days.

Note

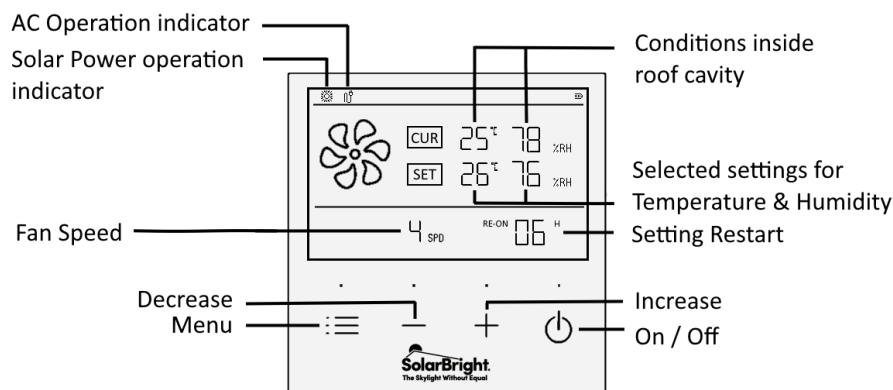
This option requires a GPO (General Power Outlet) inside the roof.

Note

If required the Solar Panel can be tilted further by removing the 2 screws at the rear end of the panel (point A) tilting up and screwing the supplied bracket to the panel and frame (points A and B). Recommended for flat roofs or roofs with pitches that do not face north.




User guide for Maxbreeze Remote Control





Click on menu button to check the selected settings and to switch between the functions

- Click on increase /decrease buttons to adjust the setting values
- Click Off/On button to start or stop the motor
- To change the temperature unit between °C and °F
 - For black remotes: Press and hold the On/Off button for 10 seconds while in temperature mode.
 - For white remotes: Press the Menu and On/Off buttons together for 10 seconds.
- Please note the size of the LED screen may differ between models, functionality remains the same

Understanding Symbols

	Rotating Blade = Motor is running Static Blade = Motor is ON but not running Flashing Blade = Motor is Off or not paired to the remote NO Blade = Motor is Off		
25 °C	Select the desired temperature inside the roof cavity – Ideal temperature is 25°C	78 %RH	Select the desired humidity level inside the roof cavity – Ideal level is 90%
4 SPD	Select desired fan speed (options of 1, 2, 3, 4 and Auto), ideal level is Auto. In Auto mode, the fan speed adjusts automatically based on the roof conditions. It will stop once the temperature drops to <25°C and humidity < 50%. When in Auto mode speed is not displayed.	06 H	Setting restart (countdown) timer, example: If the motor is turned off manually, it will turn on automatically after 6 hours on after any other number of hours selected

Pairing brand-new remote to the motor

- 1- Turn the power off (if connected to main power) and cover the solar panel, ensure all source of power are fully disconnected. Wait for 10 seconds
- 2- Uncover the solar panel to reconnect power then immediately click on 2 buttons decrease & power   simultaneously for 5 seconds.
Lights 2 & 4 will flash indicating the pairing is completed, the blade will start rotating (providing ambient conditions meet the selected settings).